

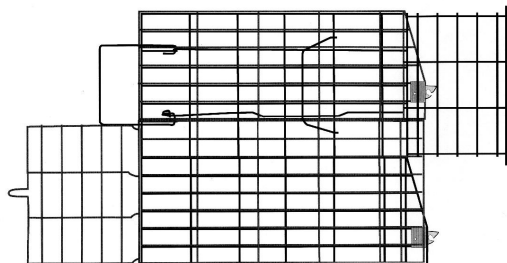
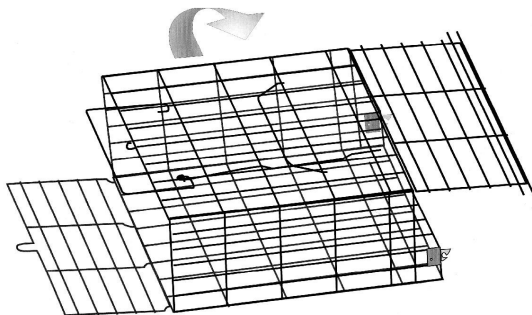
ACTO AGRICULTURE

SUPER SLAM POSSUM CAGE

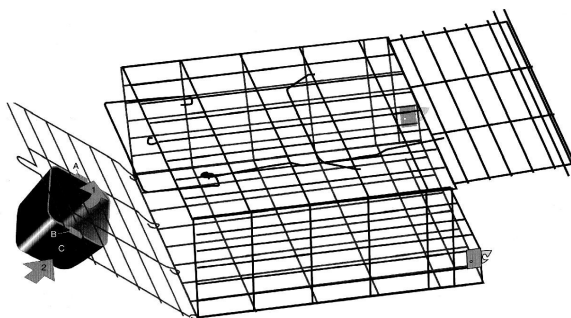
Method of Operation

Step 1 Take the flattened cage and lay it out on floor as shown.

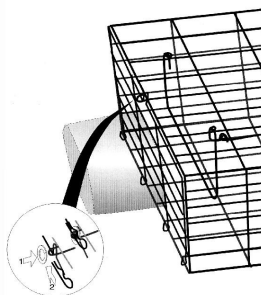
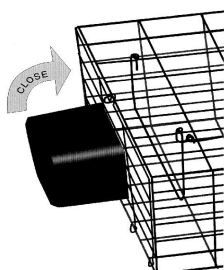
Step 2 To erect, take the flattened cage and raise the long edge upwards.



Step 3 Take the bait box, insert lug A behind the wire frame (1), squeeze panel C whilst pushing box in (2) towards wire frame and snap the lug B behind the wire frame. This should secure bait box in place.



Step 4 Close this rear gate ready for locking



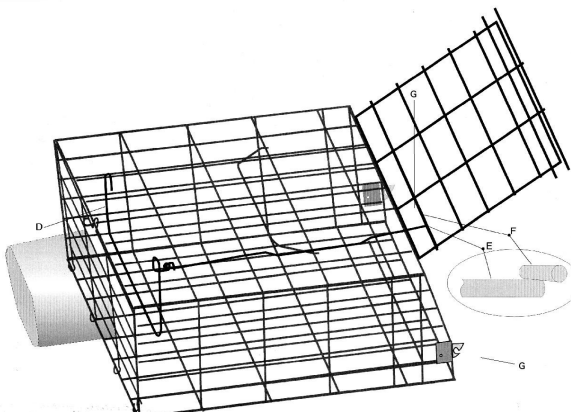
Step 5 Take the washer, place over the wire lugs (1) and slide the locking pin through the loop (2). This then locks the bait gate in place.

Step 6 To set the trap lift the open front gate and slide the trip rod (E) so that it supports the gate in the up position.

Make sure that rod (F) is just balanced on rod (E) See close up.

When possum enters the trap it will knock trip frame (D) forward and thus release the closing gate which will snap into the two catches (G) locking the the possum inside.

Use the handle, which has been positioned to give the safest angle for carrying a trapped possum.



ACTO AGRICULTURE NEW ZEALAND LTD

40 Spartan Road Takanini 2105 NZ

Email sales@acto.co.nz | Phone +64 9 266 2333